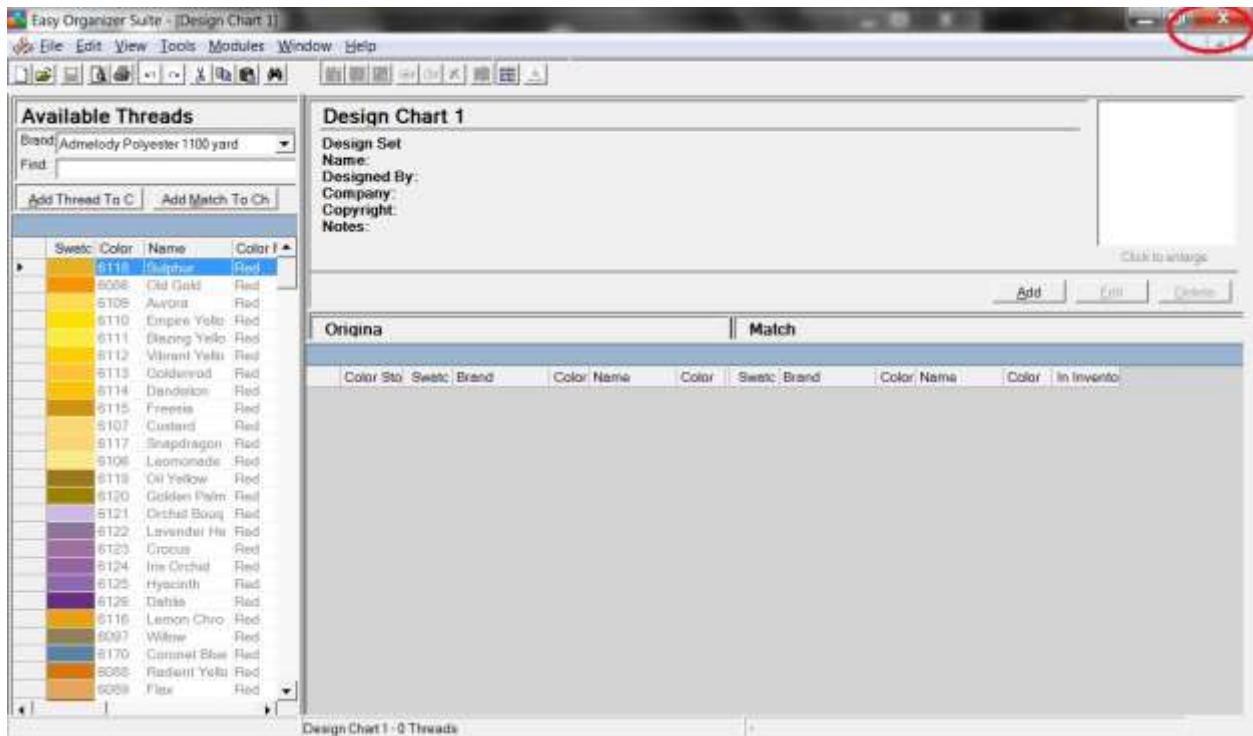


Easy Organizer Suite™

How To Install Easy Organizer Suite™ on Windows 7

To install Easy Organizer Suite™ on Windows 7, follow these instructions:

1. If Easy Organizer Suite™ is open, close it by clicking on the red X in the upper right corner of the window.



How To Install Easy Organizer Suite™ on Windows 7

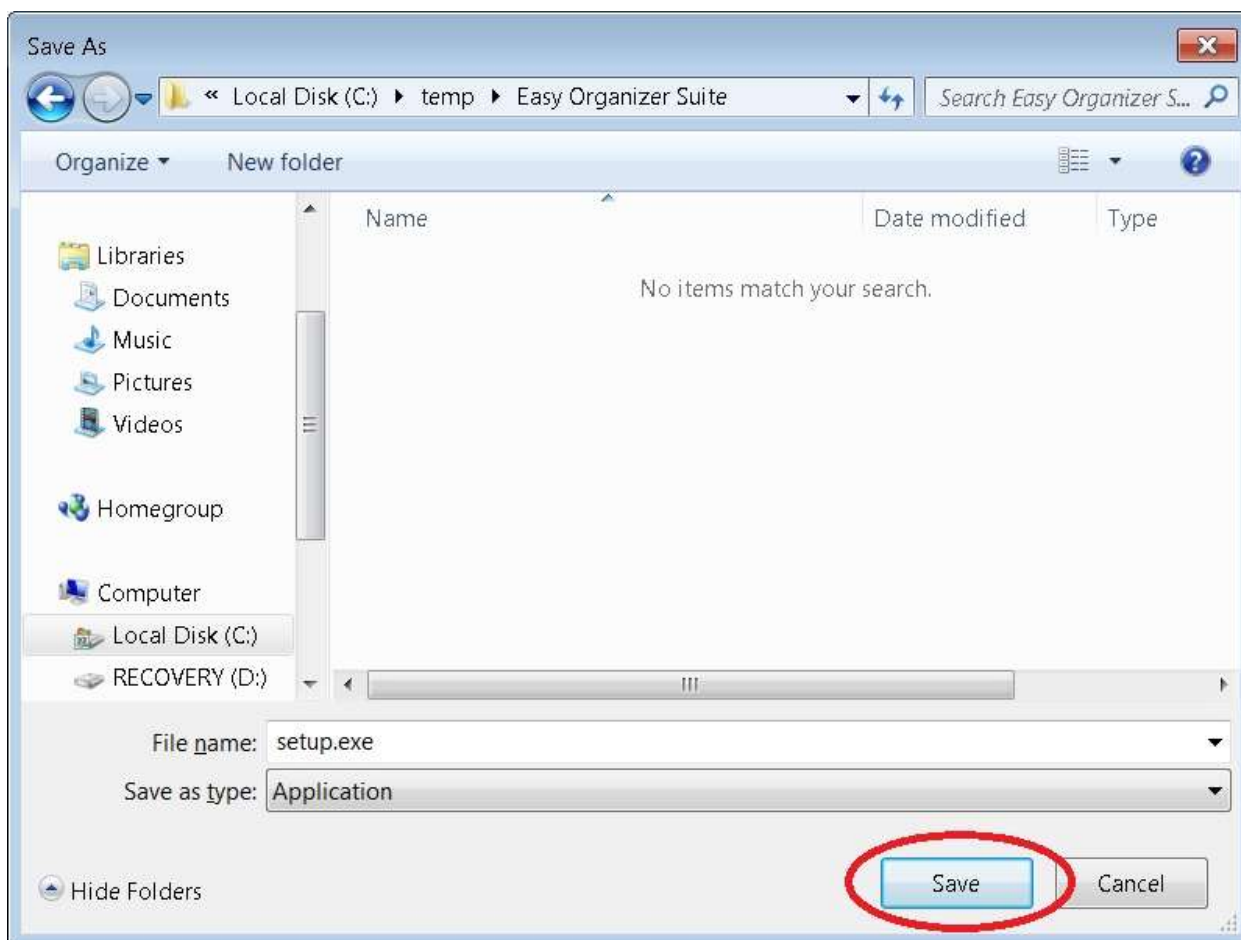
2. Download the installation file. If you have never installed Easy Organizer Suite™ on your computer, click [here](#) to download the installation file. The File Download window will be displayed, click on the Save button.

If your anti-virus software does not allow you to download the file or you have any troubles downloading the file from the Easy Organizer Suite website, please click [here](#) to download the file from the Dropbox location.

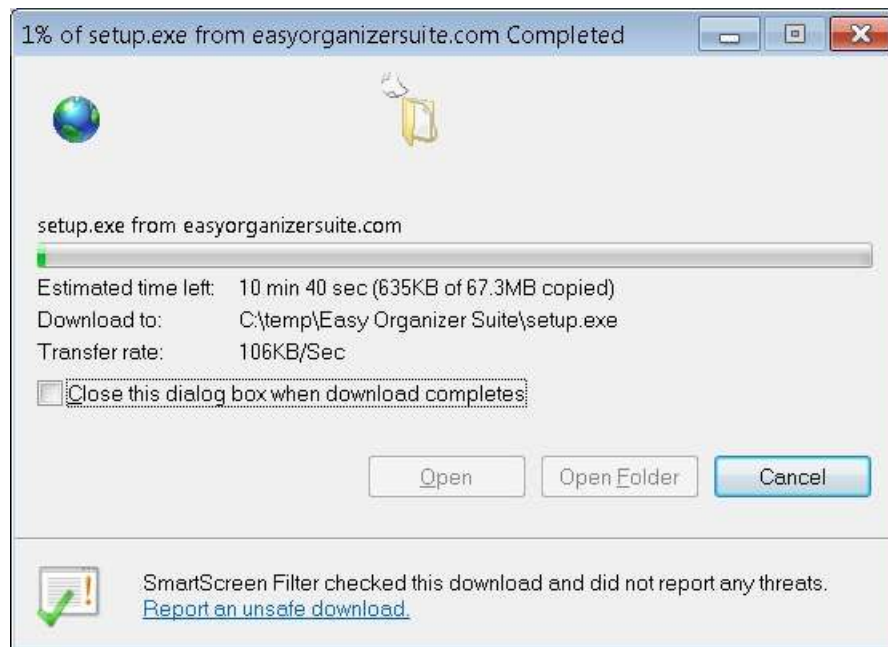


How To Install Easy Organizer Suite™ on Windows 7

3. Create a new folder (with no other files in it) to save the file in, and click on the Save button.



4. The file will download. This may take several minutes.

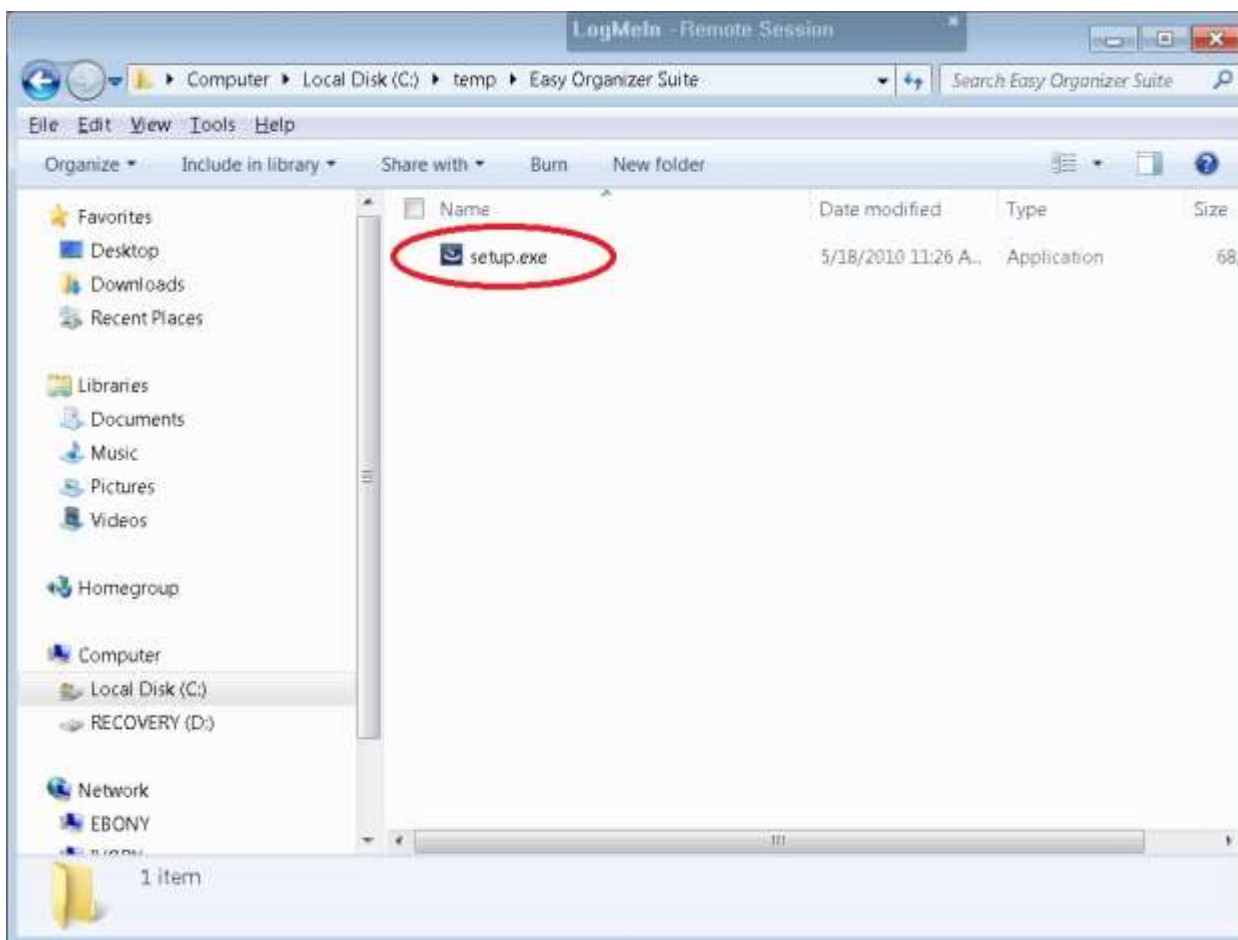


5. Right click on the Save button in the bottom left corner of your screen and select Explore.



How To Install Easy Organizer Suite™ on Windows 7

6. Navigate to the directory where you saved the downloaded file. Run the program called setup.exe by double clicking on it in the Explore window.



7. If the Open File - Security Warning window opens and asks you if you are sure if you want to run this file, click on the Yes button.



8. The installation will display the Preparing to Install window.

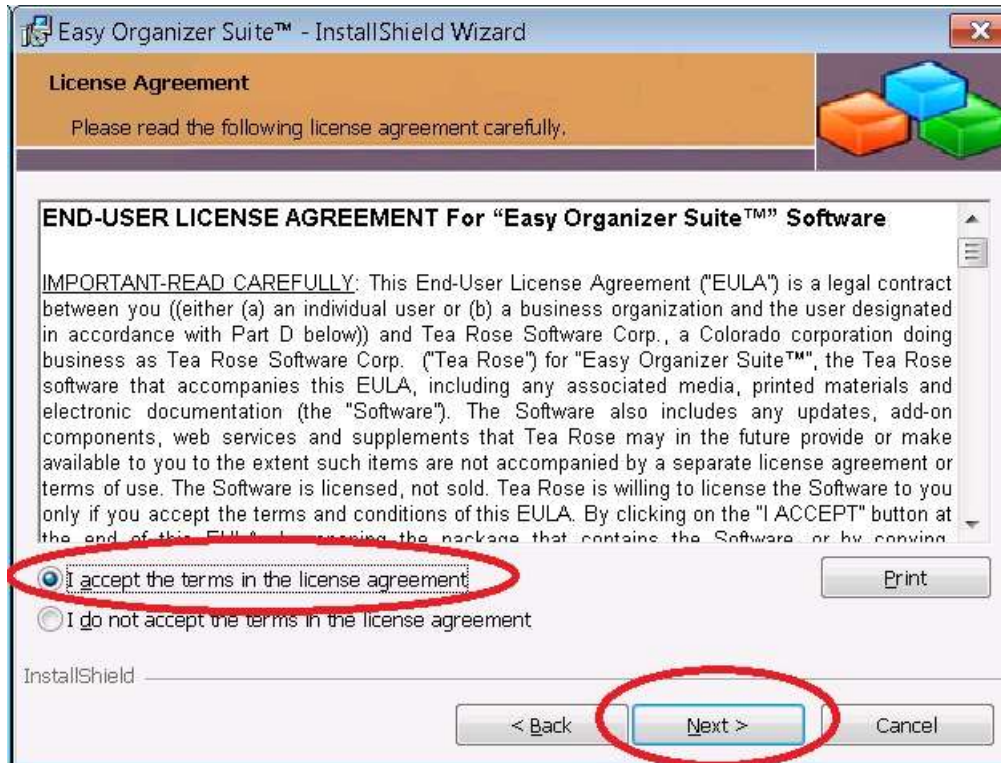


How To Install Easy Organizer Suite™ on Windows 7

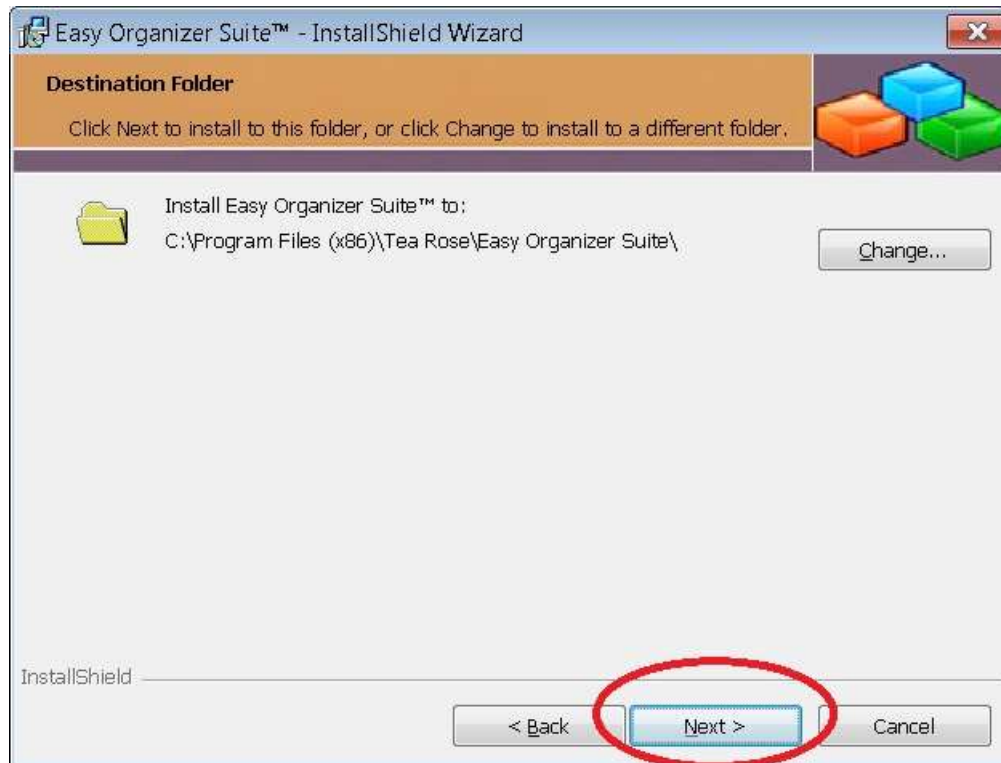
9. The installation will display the Welcome window. Click the Next button to continue.



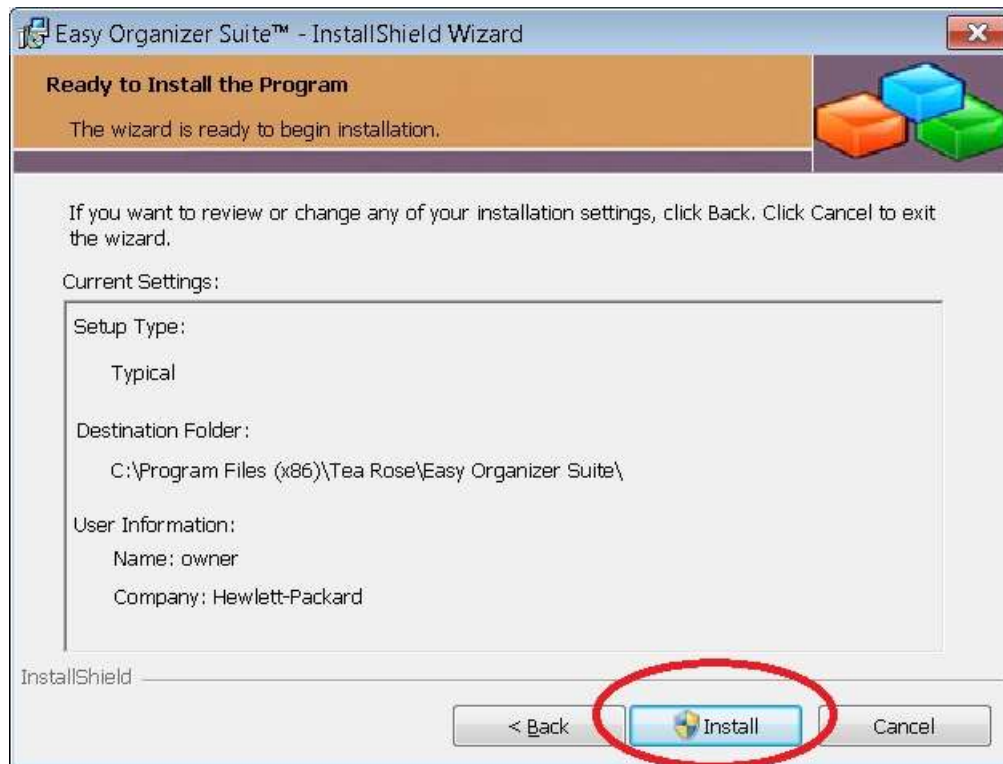
10. The installation process will display the License Agreement. You can print the License Agreement by clicking on the Print button. You must accept the license agreement by selecting the "I accept the terms in the license agreement" radio button, then click on the Next button.



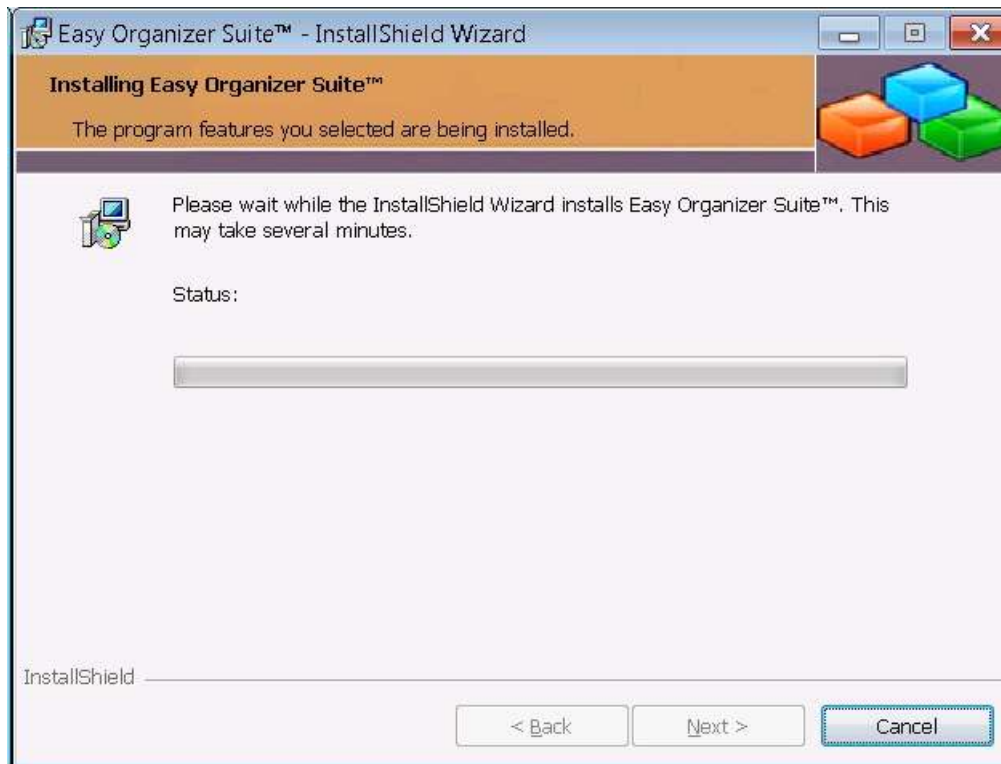
11. The installation process shows where the program will be installed. If you would like to install the program to a different folder, click on the Change button. When your selected folder is displayed, click on the Next button.



12. The installation is ready to install the program.



13. The program will be installed. This may take several minutes.



14. The installation program has installed Easy Organizer Suite™. If you would like the program to open, ensure that the "Launch program" checkbox is checked. Click on the Finish button.

